



“The Ridge”

Concord, Massachusetts

The Ridge, a coveted, walk to town neighborhood, is home to this striking 1920's Colonial. Distinguished mahogany paneling, exposed structural beams, exquisite period detail, built-ins, beautiful hardwood floors, and French Doors are just some of the charming features of this stone front house.

A green house and screened porch overlook a stunning, and private lot with terraced perennial gardens that is just under one acre.

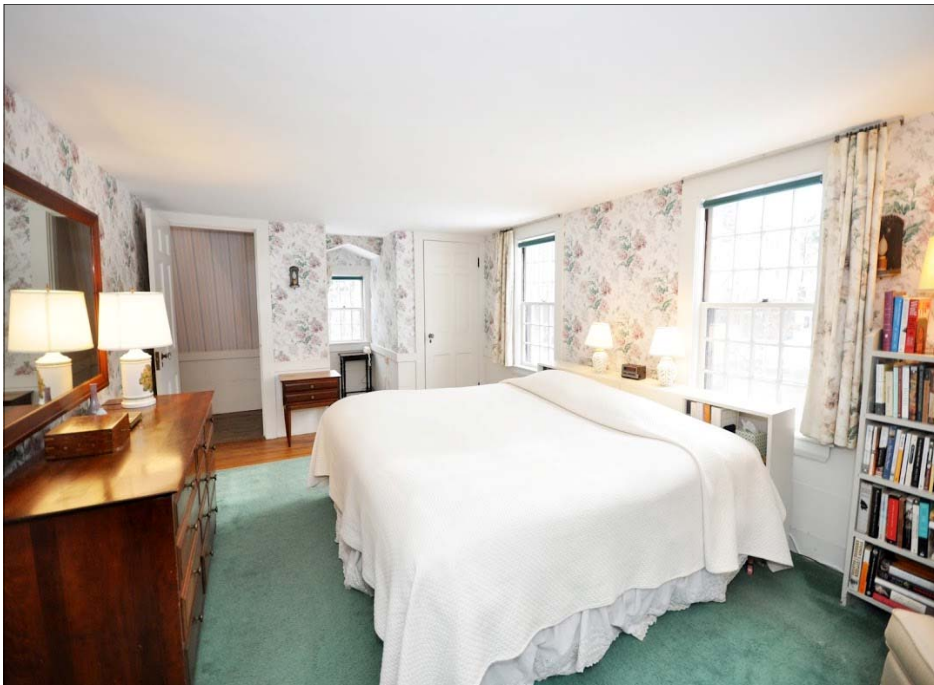
This very special property is just one half mile from Concord Center, off of the famed "American Mile", in Concord's most popular neighborhood.





## WALK TO:

- Heritage Swim Club
- Boston Commuter Rail
- Concord-Carlisle High School
- Alcott Elementary School
- Emerson Playground/Pool
- Concord Public Library
- Emerson Umbrella for the Arts
- Concord Art Association
- Concord Museum



## Overview

Style ..... Colonial  
 Year Built ..... 1928  
 Rooms ..... 9  
 Bedrooms ..... 4  
 Baths ..... 3 Full  
 Lot Size ..... .9999 Just under 1 acre  
 Living Area ..... 2,619 SF

## Structure

Color ..... Grey  
 Exterior ..... Clapboard, Brick  
 Roof ..... Asphalt  
 Foundation ..... Poured Concrete  
 Floors ..... HW, Tile, Vinyl, W/W  
 Driveway ..... Paved  
 Fireplace ..... 2  
 Garage ..... 2 Car, Under  
 Lower Level ..... Yes  
 Porch ..... Screened  
 Greenhouse ..... Yes

## Systems

Heat ..... Steam  
 Fuel ..... Oil  
 Hot Water ..... 2004 \*  
 Electric ..... Circuit Breakers  
 Water ..... Town  
 Sewage ..... Private

## Amenities

Range ..... Yes  
 Refrigerator ..... Fisher Paykel  
 Dishwasher ..... Fisher Paykel

## Rooms

### First Floor

Living Room ..... 24'6"x11'6"  
 Dining Room ..... 15'6"x12'8"  
 Family Room ..... 25'6"x15'  
 Kitchen ..... 8'8"x16'8"  
 Pantry ..... Yes  
 Master BR-1 ..... 11'10"x19'2"  
 Bath ..... Full

### Second Floor

Master Br-2 ..... 19'x11'6"  
 Bath ..... Full  
 Bedroom 3 ..... 15'6"x11'4"  
 Bedroom 4 ..... 15'6"x11'4"  
 Bath ..... Full

### Lower Level

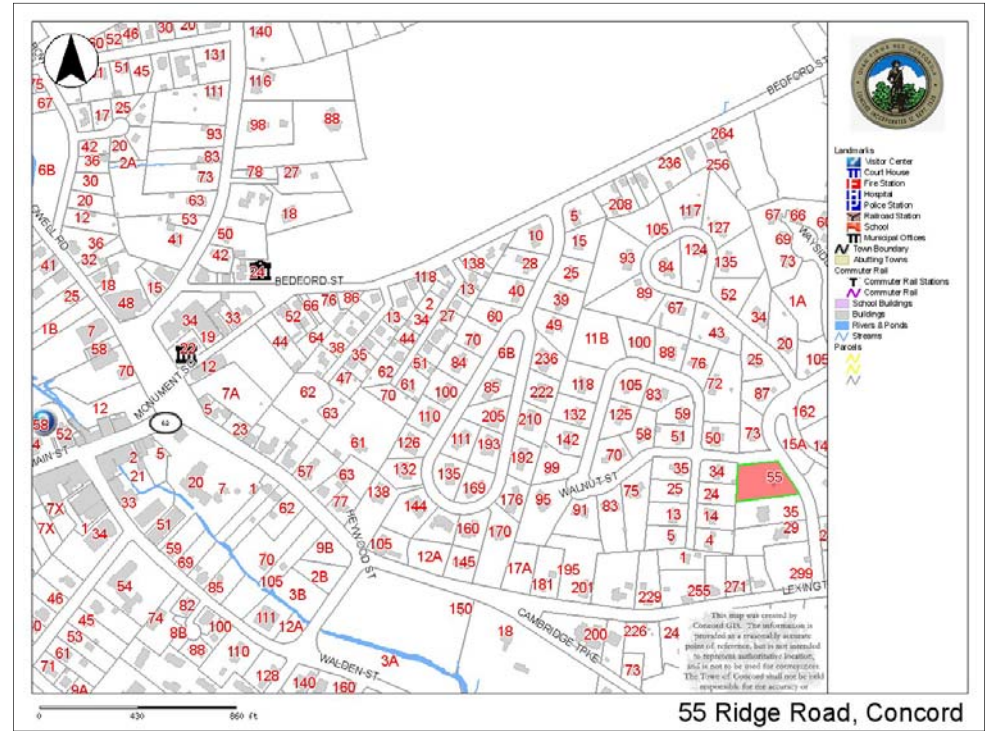
Library/ Play Room ... \*w/FP\*16'2"x11'  
 Laundry ..... 11x10  
 Utility/Storage ..... 7x36

## Legal

Zoning ..... Residential  
 Assessment ..... \$953,500  
 Taxes ..... \$12,949  
 Fiscal Year ..... 2012  
 Registry ..... SMRD  
 Book/Page ..... 19811 / 584  
 Schools ..... Alcott, CCHS  
 Title V ..... In Hand  
 \*Electric,+ Office/Playroom heat is Electric  
 Thermal Storage

[www.concordpublicschools.net](http://www.concordpublicschools.net)

[www.concordma.gov/pages/concordma\\_LightPlant/ets](http://www.concordma.gov/pages/concordma_LightPlant/ets)



Marketed By  
**Chris Upton**  
**978-807-6202**

Office: **978-369-3600**  
**ChrisUpton100@gmail.com**

[www.NewEnglandMoves.com](http://www.NewEnglandMoves.com)



**Jim Preston**  
**617-519-3031**  
**Mortgage**



**23**  
**Monument Street**  
**Concord, MA 01742**

